



FOR SALE

Great Commercial Development Opportunity!

904-415-3055

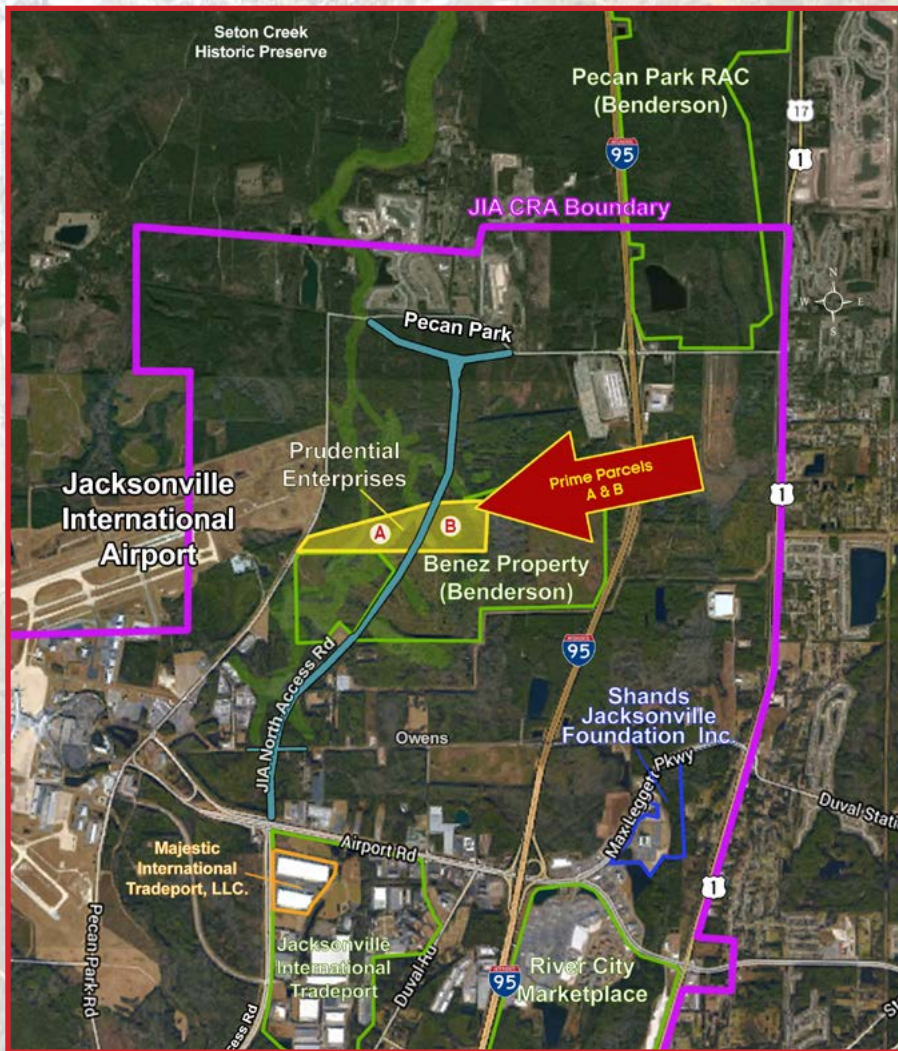
info@jaxairportproperty.com

Charles Burns REAL ESTATE

Two Prime Parcels

- Adjacent to Benderson Development Company & Jacksonville Aviation Authority
- Fee Simple

- **NO Seller Design Review**
- Working Pine Tree Farm (harvests: 1973, 1995, 2015);
- Zoning: Light Industrial/Warehouse



West Parcel (A):

Frontage on International Airport Blvd. North and Pecan Park Road

- Total acreage: 36.85 +/-
- Asking Price: *Not Disclosed*

East Parcel (B):

Frontage on International Airport Blvd. North

- Total acreage: 30.04 +/-
- Asking Price: *Not Disclosed*

More information at www.jaxairportproperty.com

